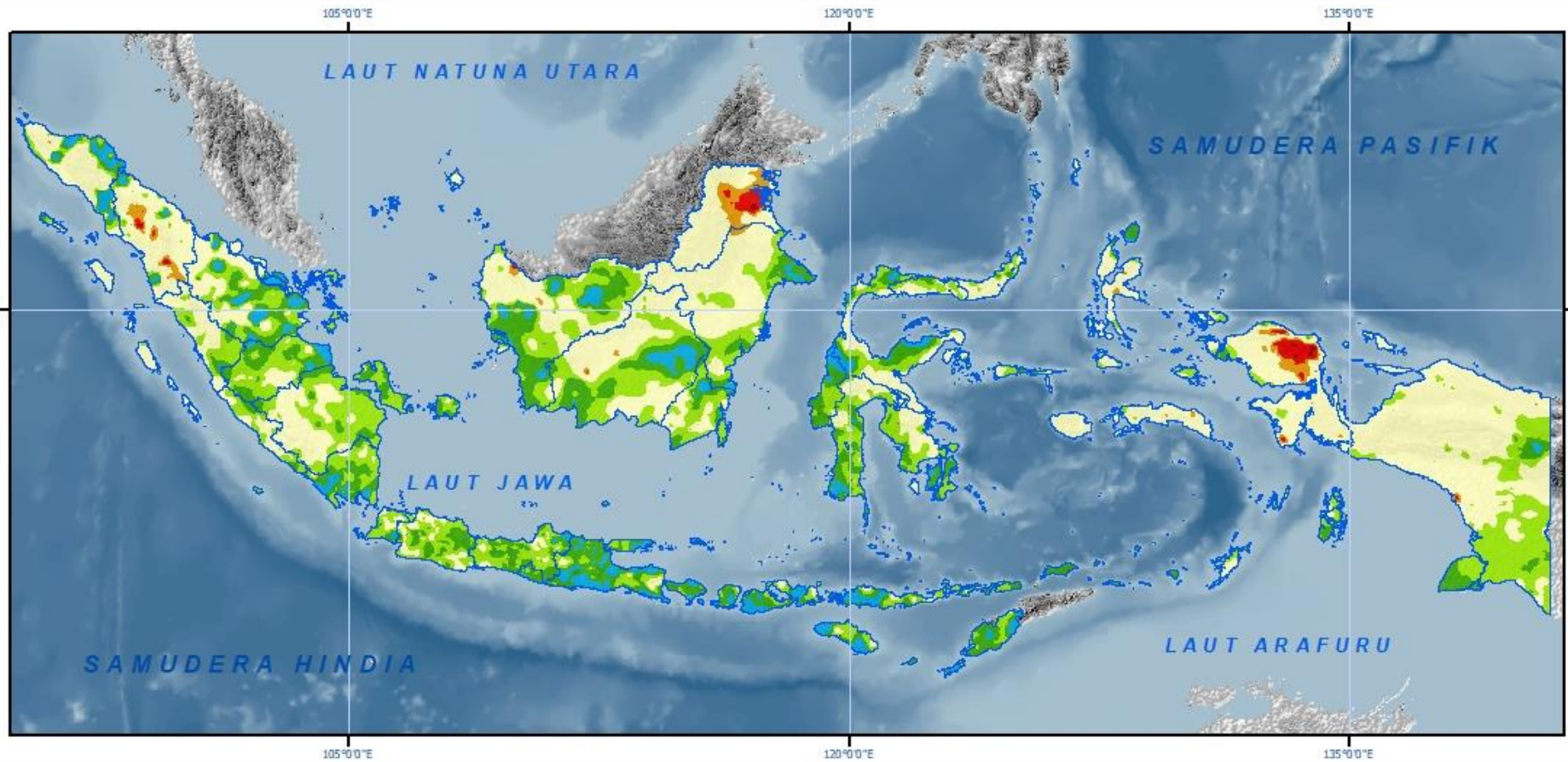


**MONITORING KEKERINGAN  
DI INDONESIA  
DENGAN METODE SPI**



**BIDANG ANALISIS VARIABILITAS IKLIM**  
Update 31 Oktober 2022

**BMKG**












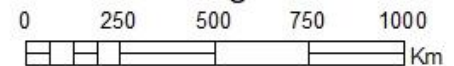
**1-MONTH STANDARDIZED PRE CIPITATION INDEX (SPI)  
INDEKS PRE SIPITASI TERSTANDARISASI (SPI) 1 BULANAN  
OKTOBER 2022  
INDONESIA**



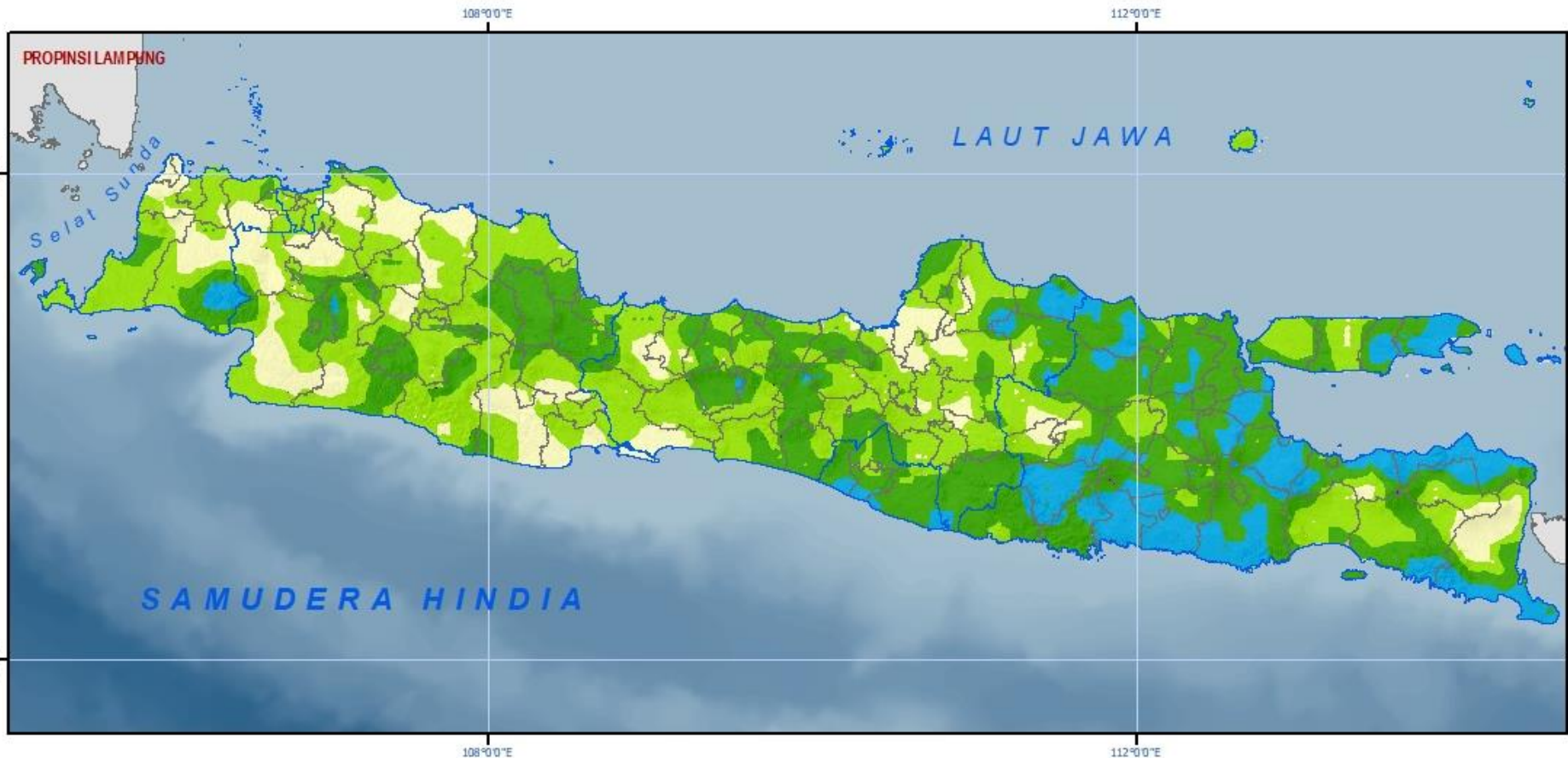
**BADAN METEOROLOGI KLIMATOLOGI DAN GEOFISKA**

**INFORMATION/ KETERANGAN :**

	Province Boundary/Batas Propinsi		Moderately Wet Agak Basah
	Extremely Dry Sangat Kering		Very Wet Basah
	Severly Dry Kering		Extremely Wet Sangat Basah
	Moderately Dry Agak Kering		Near Normal Normal
	Near Normal Normal		



Sumber Data :  
1. Data Curah Hujan Bulanan BMKG  
2. Peta Rupabumi BIG Skala 1 : 250.000



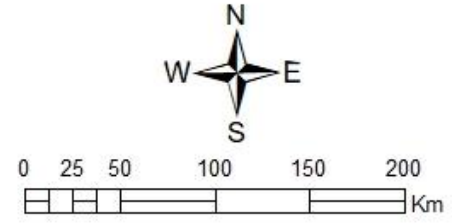
**1-MONTH STANDARDIZED PRE CIPITATION INDE X (SPI)  
INDE K S PRE SIPITASI TERSTANDARISASI (SPI) 1 BULAN AN  
OKTOBER 2022  
JAWA**



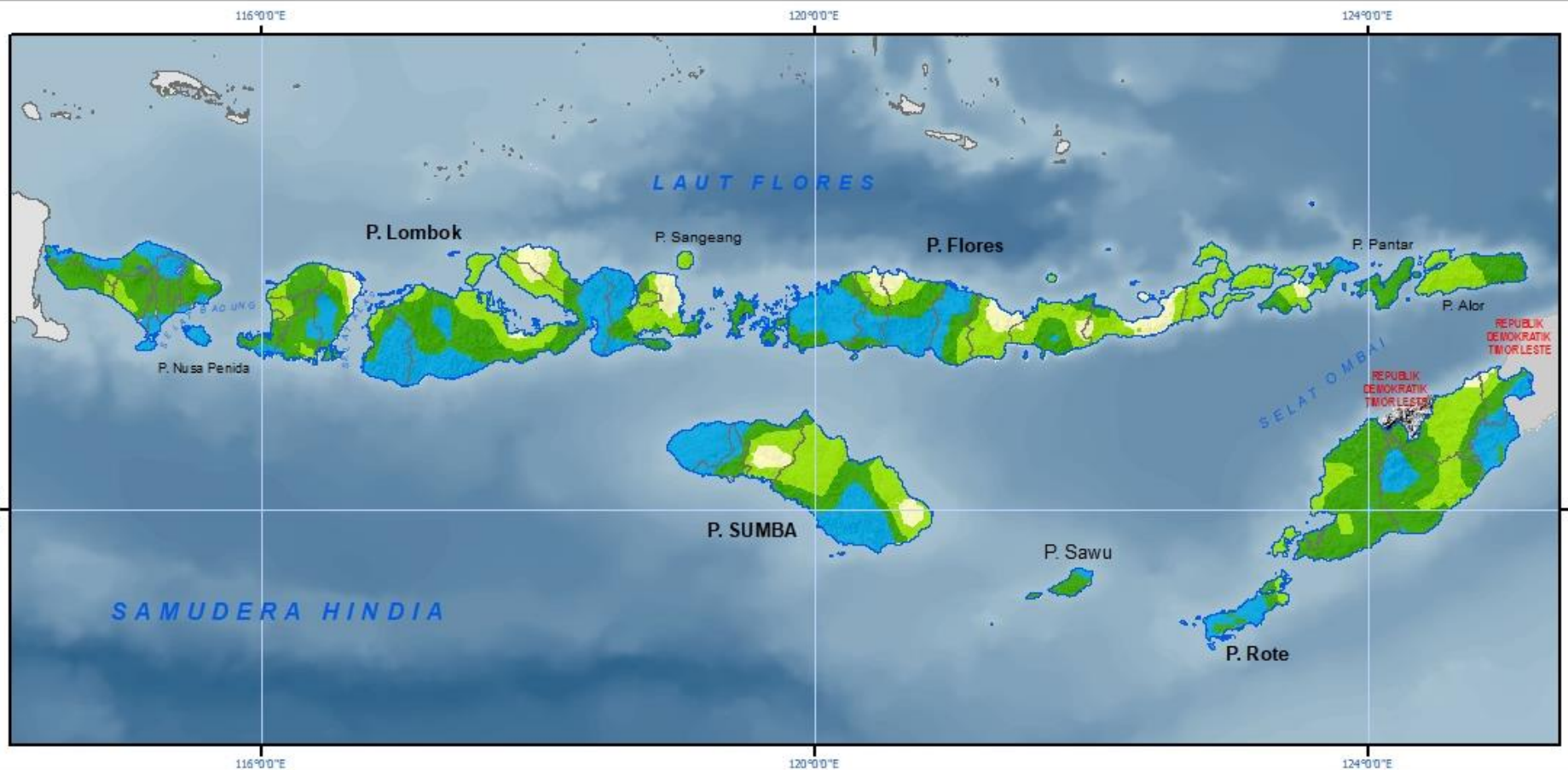
**BADAN ME TE OROLOGI KLIMATOLOGI DAN GE OFISKA**

**INFORMATION/ KETERANGAN :**

	Province Boundary Batas Propinsi		Extremely Dry Sangat Kering
	District Boundary Batas Kabupaten		Severly Dry Kering
	Water (Rivers, Lakes) Badan Air (Sungai, Danau)		Moderately Dry Agak Kering
			Near Normal Normal
			Moderately Wet Agak Basah
			Very Wet Basah
			Extremely Wet Sangat Basah



**Sumber Data :**  
1. Data Curah Hujan Bulanan BMKG  
2. Peta Rupabumi BIG Skala 1 : 250.000



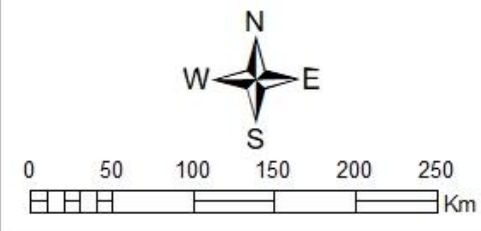
**1-MONTH STANDARDIZED PRECIPITATION INDEX (SPI)  
 INDEKS PRECIPITASI TERSTANDARISASI (SPI) 1 BULANAN  
 OKTOBER 2022  
 BALIDAN NUSA TENGGARA**



**BADAN METEOROLOGI KLIMATOLOGI DAN GEOFISKA**

**INFORMATION/ KETERANGAN :**

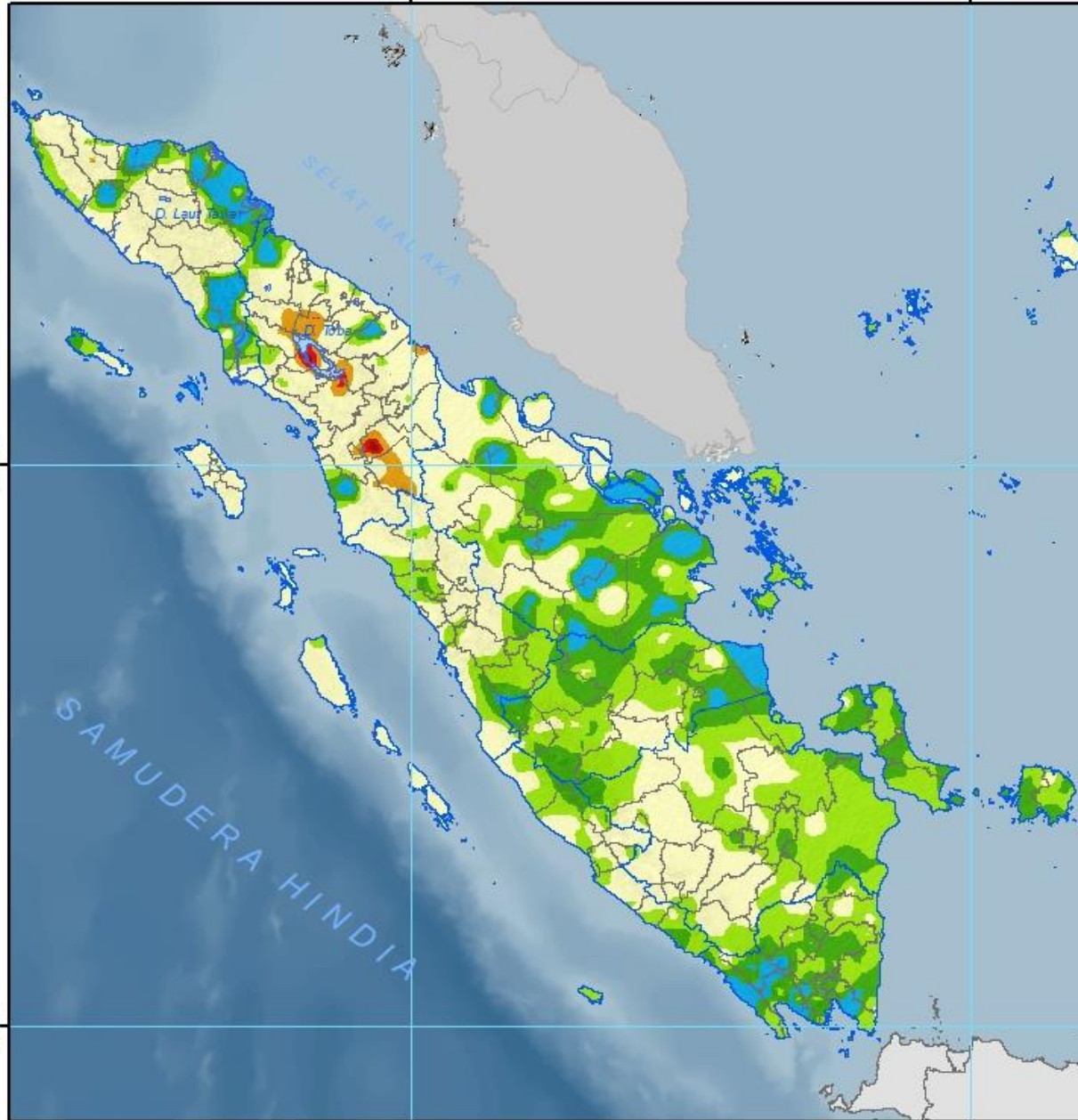
	Province Boundary Batas Propinsi		Extremely Dry Sangat Kering
	District Boundary Batas Kabupaten		Severly Dry Kering
	Water (Rivers, Lakes) Badan Air (Sungai, Danau)		Moderately Dry Agak Kering
			Near Normal Normal
			Moderately Wet Agak Basah
			Very Wet Basah
			Extremely Wet Sangat Basah



Sumber Data :  
 1. Data Curah Hujan Bulanan BMKG  
 2. Peta Rupabumi BIG Skala 1 : 250.000

100°0'0"E

107°0'0"E

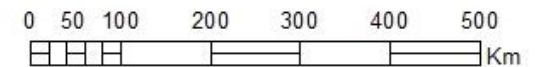
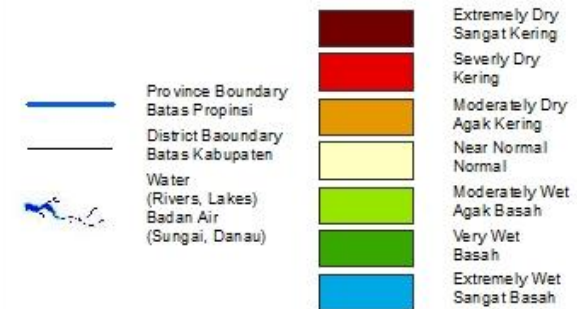


**STANDARDIZED PRECIPITATION INDEX (SPI)  
INDEKS PRE SIPITASI TERSTANDARISASI (SPI)  
1 BULANAN  
OKTOBER 2022  
SUMATERA**



**BADAN METEOROLOGI KLIMATOLOGI DAN GEOFISIKA**

**INFORMATION/ KETERANGAN :**



**Sumber Data :**

1. Data Curah Hujan Bulanan BMKG
2. Peta Rupabumi BIG Skala 1 : 250.000

100°0'0"E

107°0'0"E

1°13'0"N

1°13'0"N

5°48'0"S

5°48'0"S

100°0'0"E

107°0'0"E

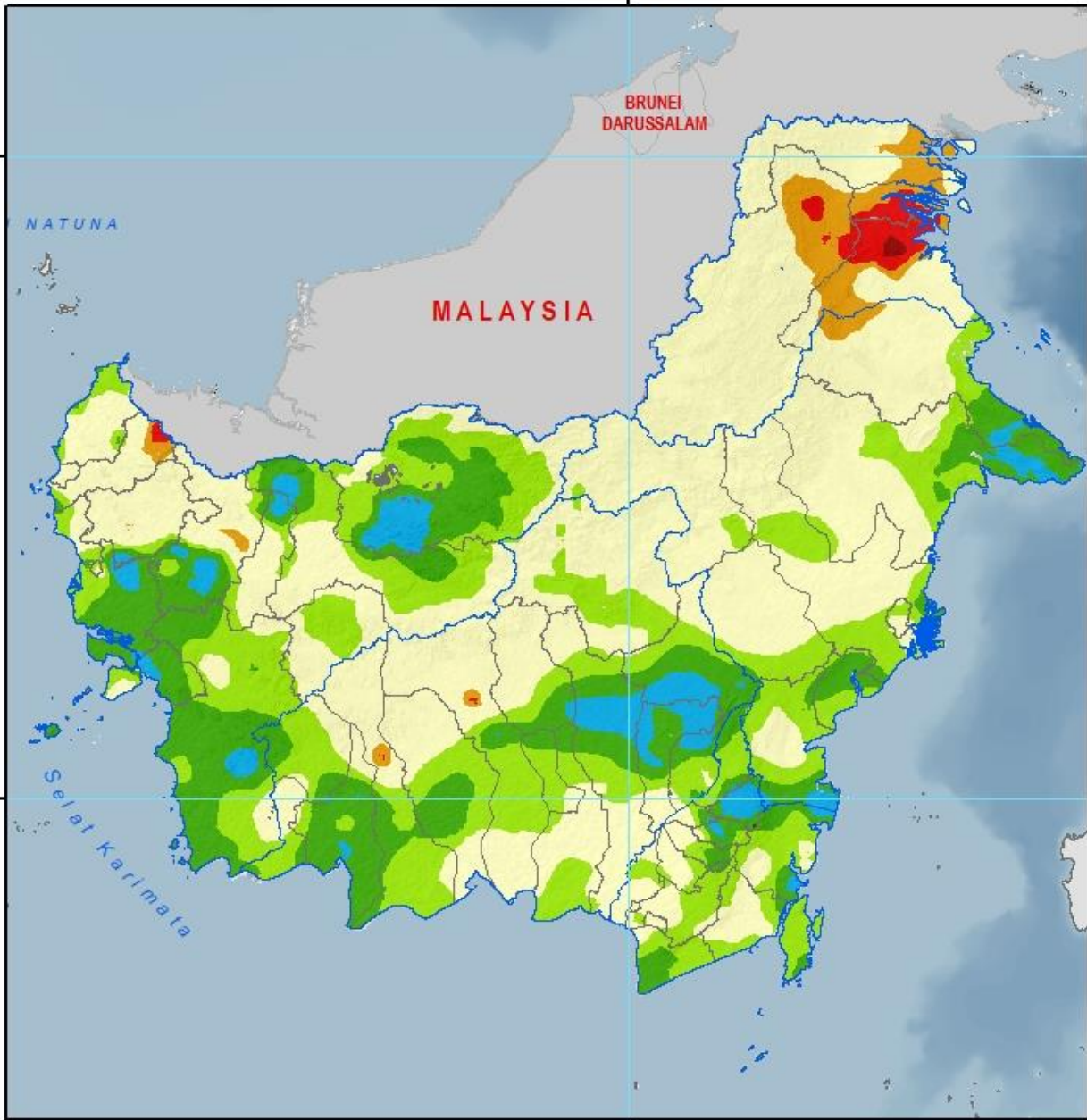
1°13'0"N

5°48'0"S

114°32'0"E

4°0'0"N

4°0'0"N



114°32'0"E

2°16'0"S

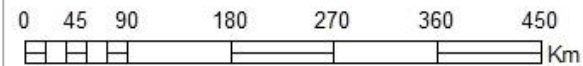
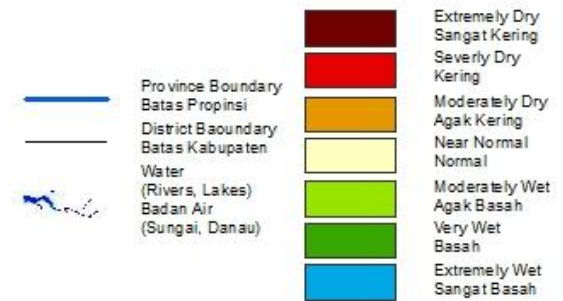
2°16'0"S

**STANDARDIZED PRECIPITATION INDEX (SPI)**  
**INDEKS PRE SIPITASI TERSTANDARISASI (SPD)**  
**1 BULANAN**  
**OKTOBER 2022**  
**KALIMANTAN**



**BADAN METEOROLOGI KLIMATOLOGI DAN GEOFISIKA**

**INFORMATION/ KETERANGAN :**

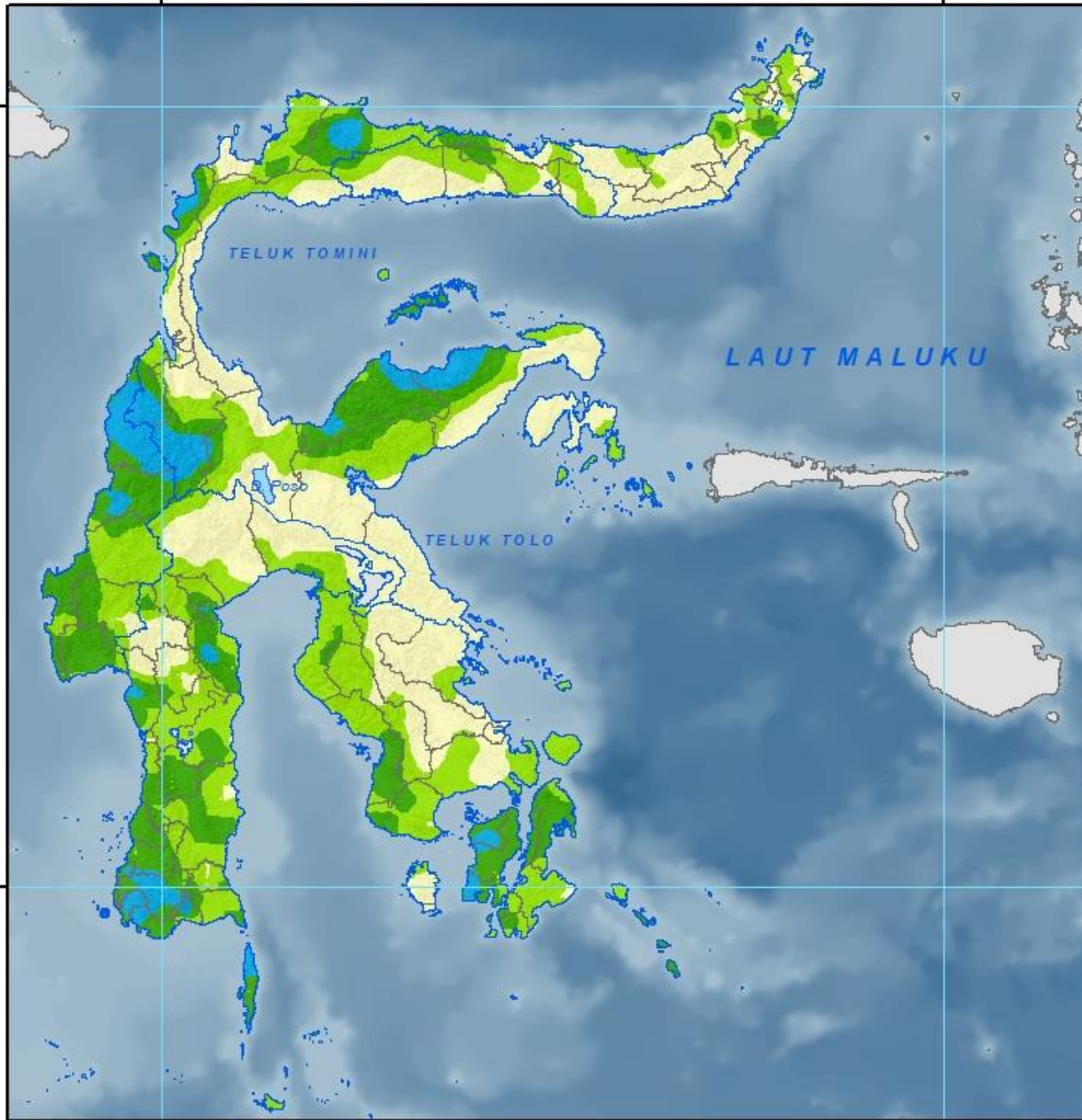


Sumber Data :

1. Data Curah Hujan Bulanan BMKG
2. Peta Rupabumi BIG Skala 1 : 250.000

119°46'0"E

126°17'0"E



119°46'0"E

126°17'0"E

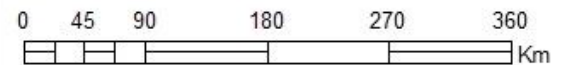
**STANDARDIZED PRECIPITATION INDEX (SPI)  
INDEKS PRE SIPITASI TERSTANDARISASI (SPI)  
1 BULANAN  
OKT OBER 2022  
SULAWESI**



**BADAN METEOROLOGI KLIMATOLOGI DAN GEOFISIKA**

**INFORMATION/ KETERANGAN :**

	Province Boundary Batas Propinsi		Extremely Dry Sangat Kering
	District Baoundary Batas Kabupaten		Severly Dry Kering
	Water (Rivers, Lakes) Badan Air (Sungai, Danau)		Moderately Dry Agak Kering
			Near Normal Normal
			Moderately Wet Agak Basah
			Very Wet Basah
			Extremely Wet Sangat Basah

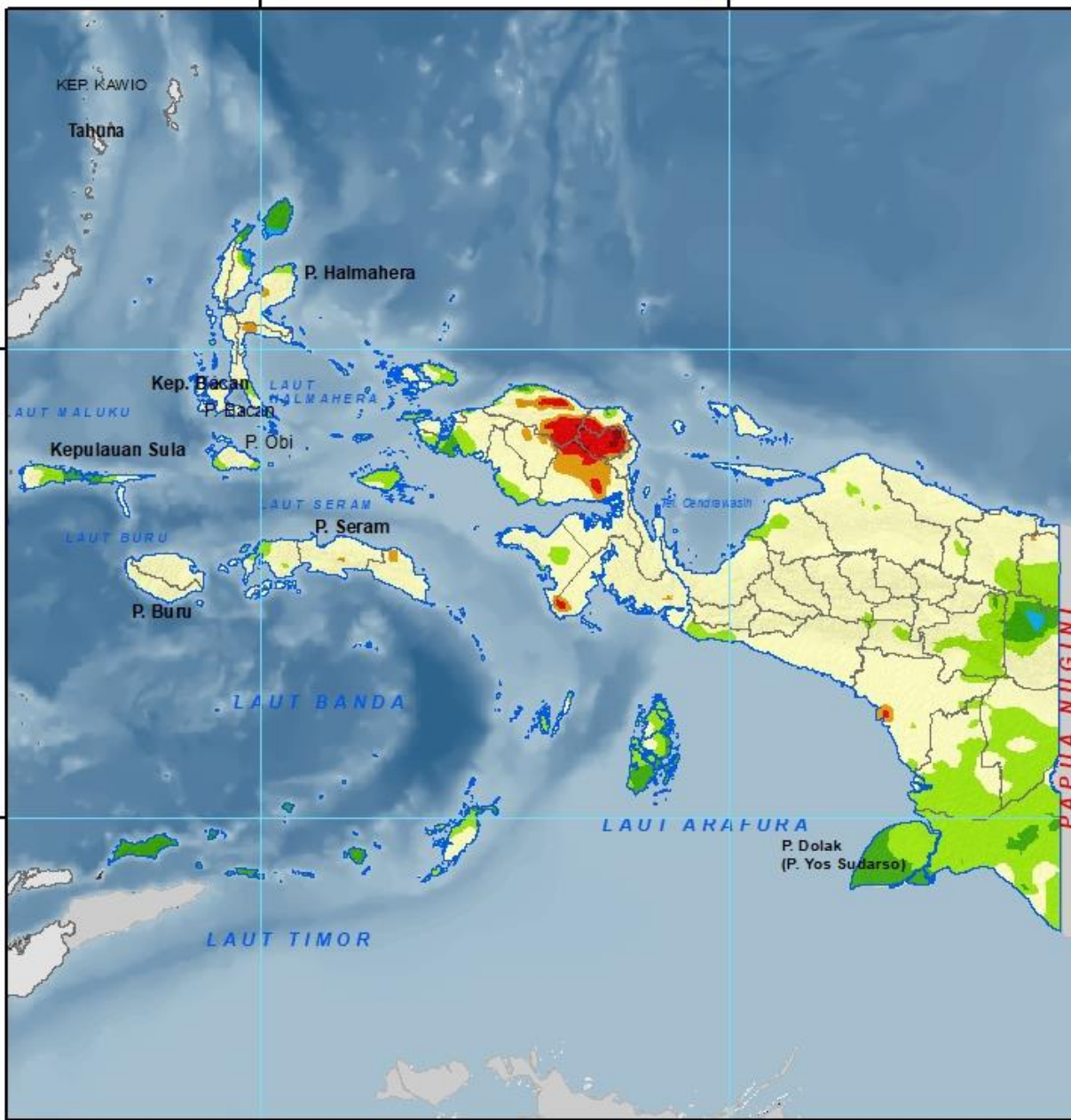


**Sumber Data :**

1. Data Curah Hujan Bulanan BMKG
2. Peta Rupabumi BIG Skala 1 : 250.000

128°11'0"E

135°42'0"E



128°11'0"E

135°42'0"E

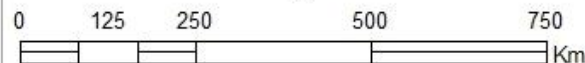
**STANDARDIZED PRECIPITATION INDEX (SPI)  
INDEKS PRE SIPITASI TERSTANDARISASI (SPI)  
1 BULANAN  
OKTOBER 2022  
PAPUA DAN MALUKU**



**BADAN METEOROLOGI KLIMATOLOGI DAN GEOFISIKA**

**INFORMATION/ KETERANGAN :**

	Province Boundary Batas Propinsi		Extremely Dry Sangat Kering
	District Boundary Batas Kabupaten		Severely Dry Kering
	Water (Rivers, Lakes) Badan Air (Sungai, Danau)		Moderately Dry Agak Kering
			Near Normal Normal
			Moderately Wet Agak Basah
			Very Wet Basah
			Extremely Wet Sangat Basah



**Sumber Data :**

1. Data Curah Hujan Bulanan BMKG
2. Peta Rupabumi BIG Skala 1 : 250.000



DAERAH	TINGKAT KEKERINGAN		
	SANGAT KERING	KERING	AGAK KERING
<b>SUMATERA</b>	<b>Sumatera Utara:</b> Samosir, Padang Lawas Utara	<b>Sumatera Utara:</b> Simalungun, Labuhanbatu, Humbang Hasundutan, Samosir, Tapanuli Utara, Toba Samosir, Padang Lawas Utara,, Tapanuli Selatan	<b>Aceh:</b> Pidie, Gayo Lues  <b>Sumatera Utara:</b> Dairi, Labuhanbatu, Labuhanbatu Utara, Deli Serdang, Humbang Hasundutan, Karo, Samosir, Simalungun, Tapanuli Utara, Toba Samosir, Mandailing Natal, Kota Padang Sidempuan, Padang Lawas, Padang Lawas Utara, Tapanuli Selatan  <b>Riau:</b> Rokan Hulu  <b>Sumatera Barat:</b> Pasaman
<b>JAWA</b>	-	-	-
<b>BALI</b>	-	-	-
<b>NTB</b>	-	-	-
<b>NTT</b>	-	-	-
<b>KALIMANTAN</b>	<b>Kalimantan Barat:</b> Bengkayang  <b>Kalimantan Utara:</b> Bulungan	<b>Kalimantan Barat:</b> Bengkayang  <b>Kalimantan Tengah:</b> Katingan, Seruyan  <b>Kalimantan Utara:</b> Nunukan, Malinau, Bulungan, Kota Tarakan, Tana Tidung	<b>Kalimantan Barat:</b> Bengkayang, Landak, Sanggau  <b>Kalimantan Tengah:</b> Katingan, Seruyan  <b>Kalimantan Timur:</b> Berau  <b>Kalimantan Utara:</b> Nunukan, Bulungan, Kota Tarakan, Malinau, Tana Tidung

DAERAH	TINGKAT KEKERINGAN		
	SANGAT KERING	KERING	AGAK KERING
SULAWESI	-	-	-
MALUKU	-	-	<p><b>Maluku:</b> Maluku Tengah, Seram Bagian Timur</p> <p><b>Maluku Utara:</b> Halmahera Timur, Halmahera Tengah</p>
PAPUA	<p><b>Papua Barat:</b> Manokwari, Pegunungan Arfak, Tamberauw, Teluk Bintuni</p>	<p><b>Papua:</b> Asmat</p> <p><b>Papua Barat:</b> Tamberauw, Manokwari, Manokwari Selatan, Maybrat, Pegunungan Arfak, Teluk Bintuni, Fak-Fak, Kaimana</p>	<p><b>Papua:</b> Nabire, Keerom, Asmat</p> <p><b>Papua Barat:</b> Tamberauw, Manokwari, Maybrat, Fak-Fak, Kaimana, Manokwari Selatan, Pegunungan Arfak, Teluk Bintuni</p>



**BMKG**

@infoBMKG



facebook



*Jl. Angkasa 1 No.2 Kemayoran Jakarta Pusat, Indonesia*  
[www.bmkg.go.id](http://www.bmkg.go.id)

Info Iklim : 021 4246321 ext. 1707

Info Cuaca : 021 6546315/18

Info Gempabumi : 021 6546316

# Terima kasih